



(19) **United States**

(12) **Patent Application Publication**
Tsai et al.

(10) **Pub. No.: US 2011/0050550 A1**
(43) **Pub. Date: Mar. 3, 2011**

(54) **PIXEL DRIVING CIRCUIT FOR LIGHT
EMITTING DISPLAY PANEL**

(52) **U.S. Cl. 345/76**

(57) **ABSTRACT**

(75) **Inventors: Tsung-Ting Tsai, Hsinchu (TW);
Lee-Hsun Chang, Hsinchu (TW)**

A display panel has a plurality of OLED pixels arranged in rows and columns. The pixel driving circuit has two or more current paths through a plurality of switching elements for providing the necessary current to the OLEDs in a pixel. The control end of each switching element is connected to the control end of the other switching elements, but each switching element has a separate power source which can be separately adjustable. In some embodiments, in a pixel or sub-pixel, one switching element is located at one end and one switching element is located at the other end of a pixel length, and each pixel is adjacent to a first power source line and a second power source line along the pixel length for separately providing the electrical power to two switching elements.

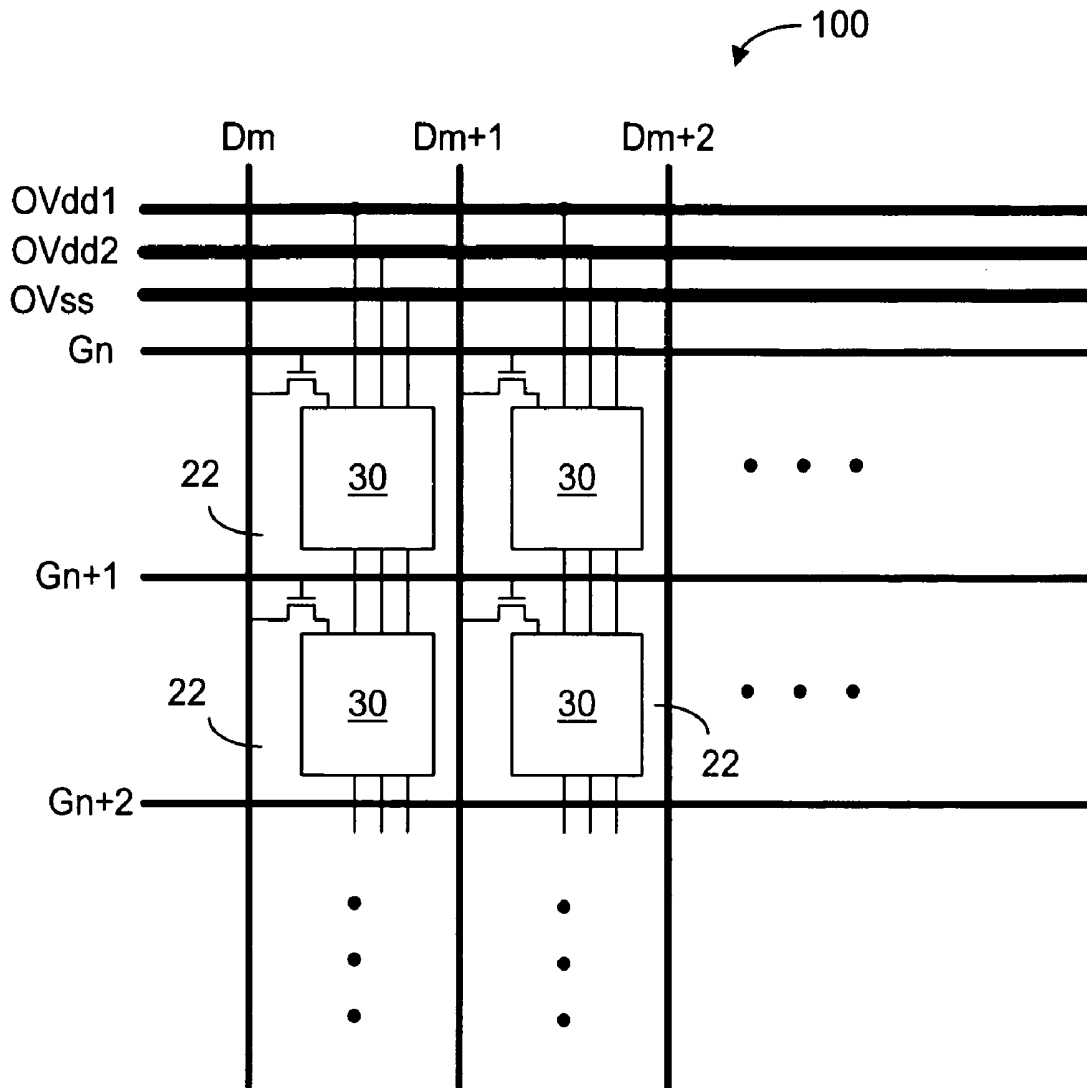
(73) **Assignee: AU Optonics Corporation**

(21) **Appl. No.: 12/584,221**

(22) **Filed: Sep. 1, 2009**

Publication Classification

(51) **Int. Cl. G09G 3/30 (2006.01)**



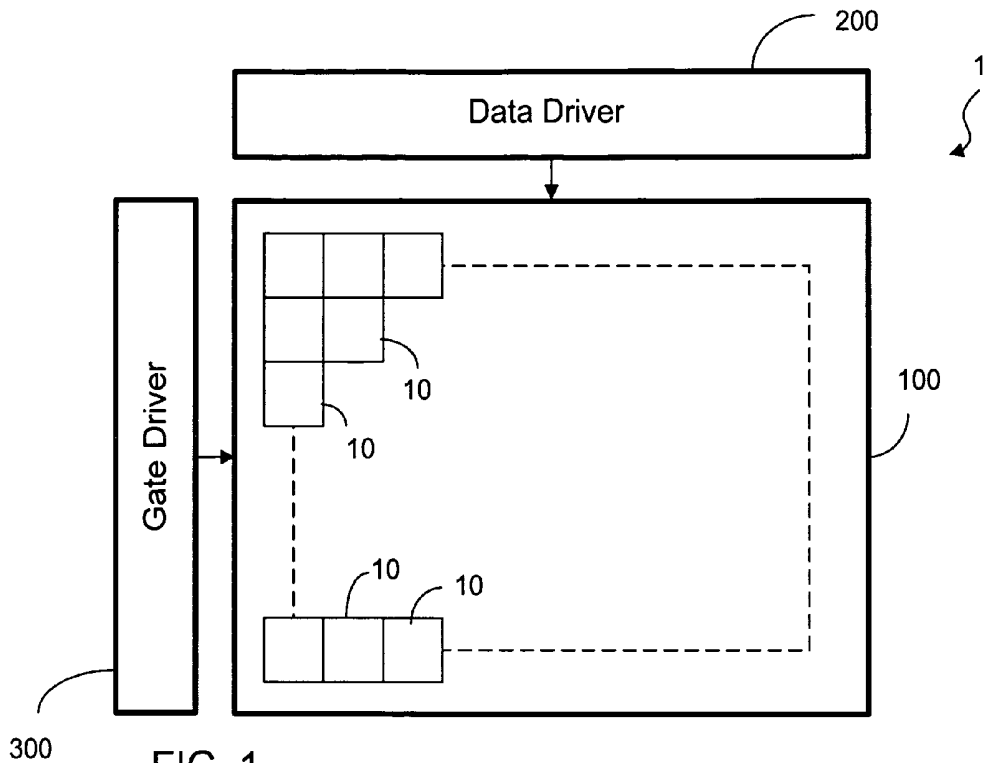


FIG. 1
(prior art)

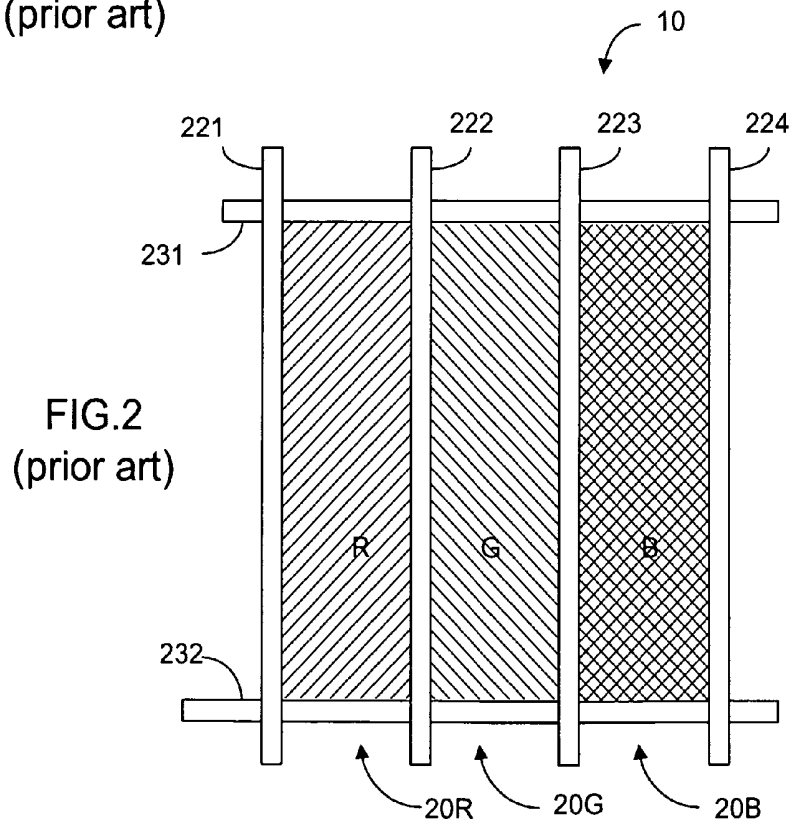


FIG. 2
(prior art)

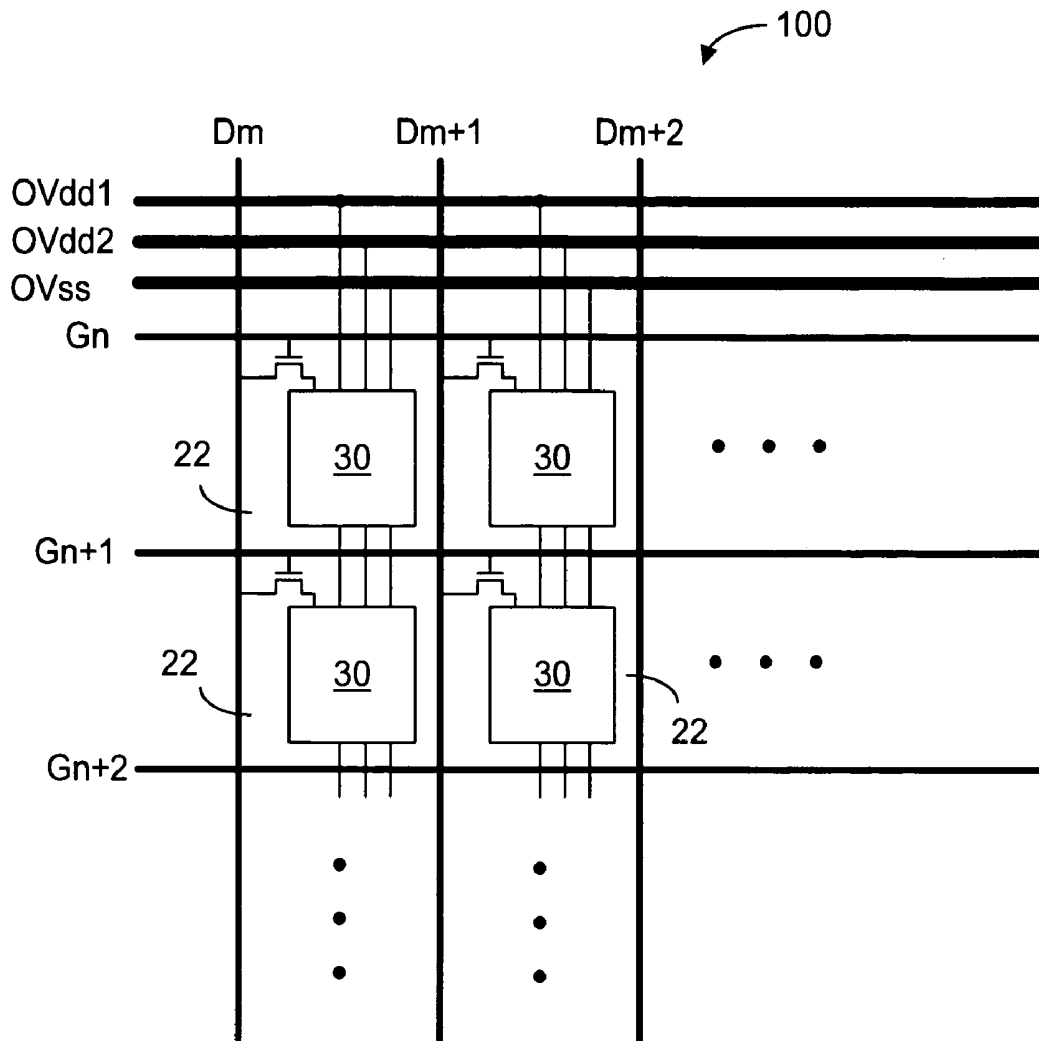


FIG. 3

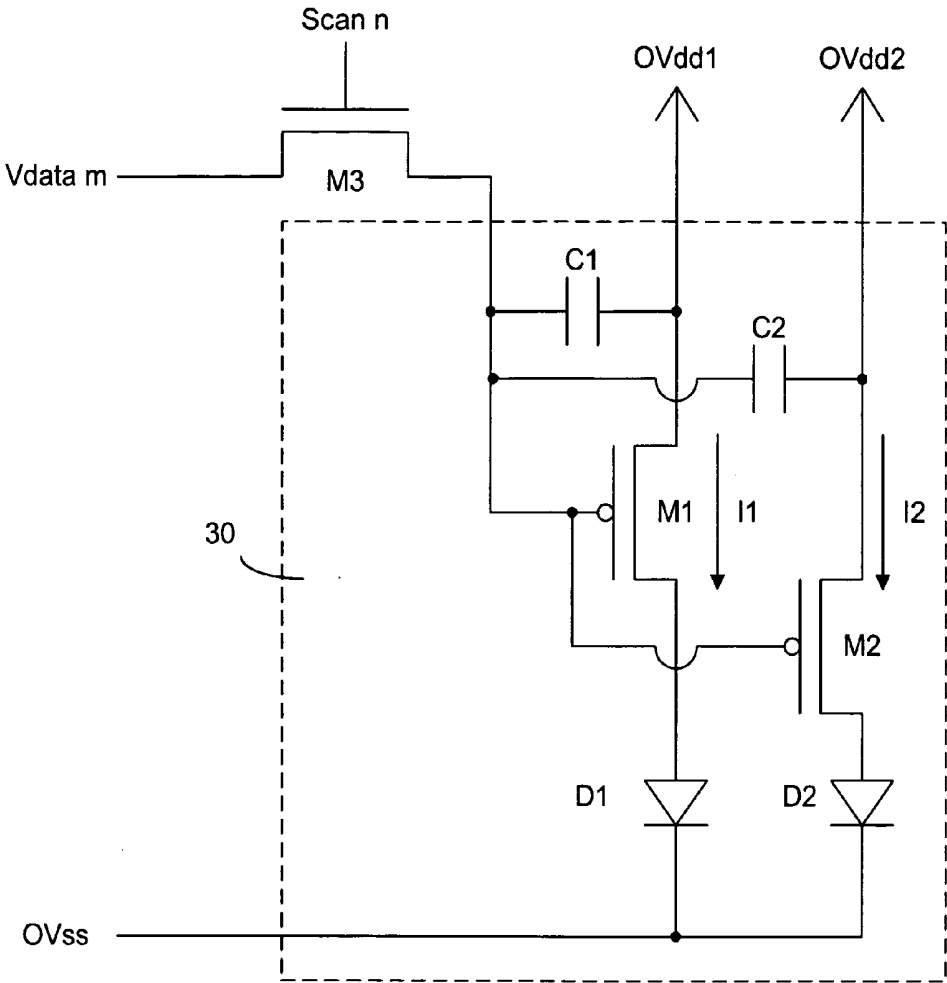


FIG. 4

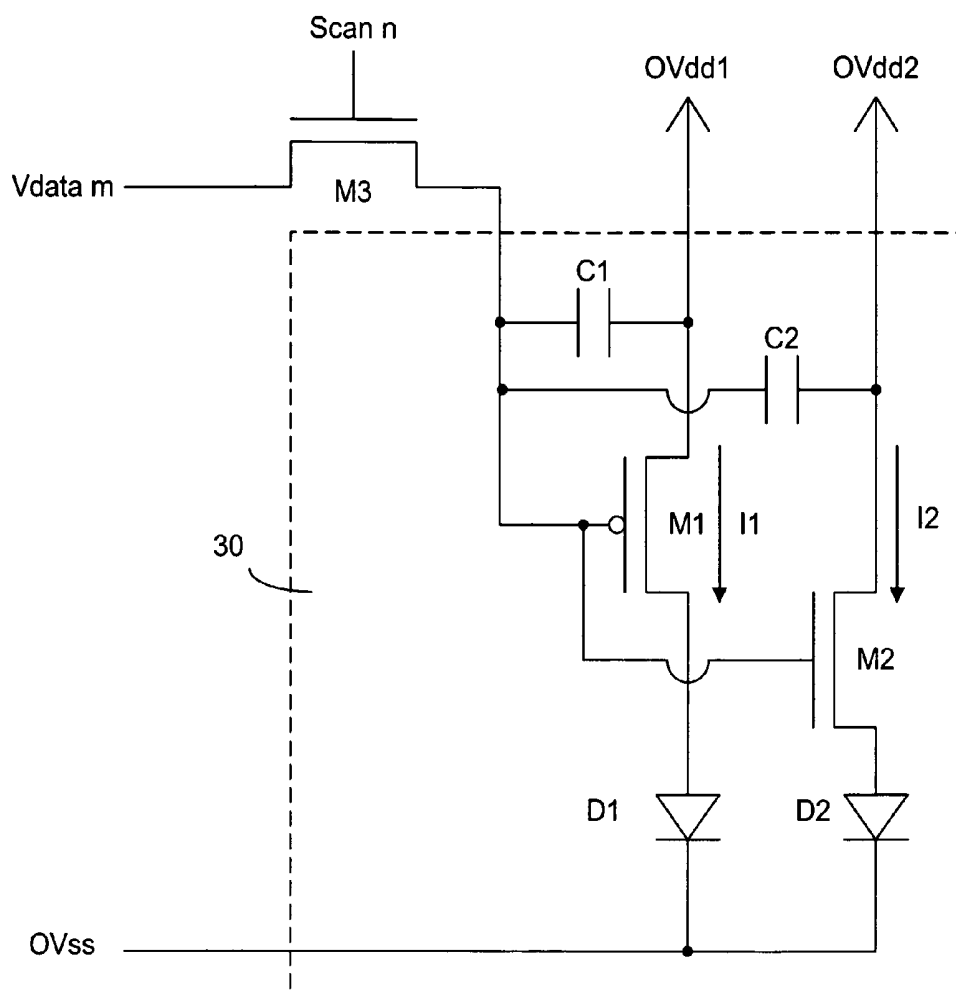


FIG. 5

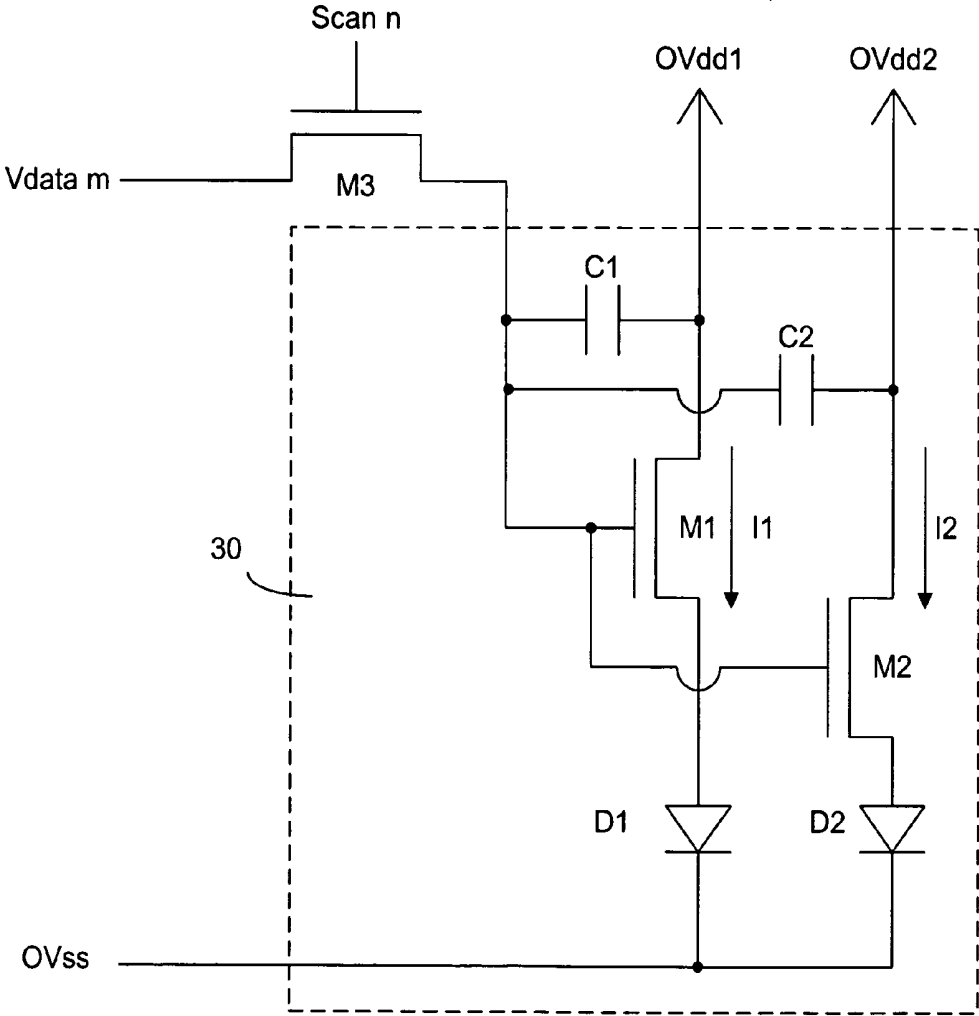


FIG. 6

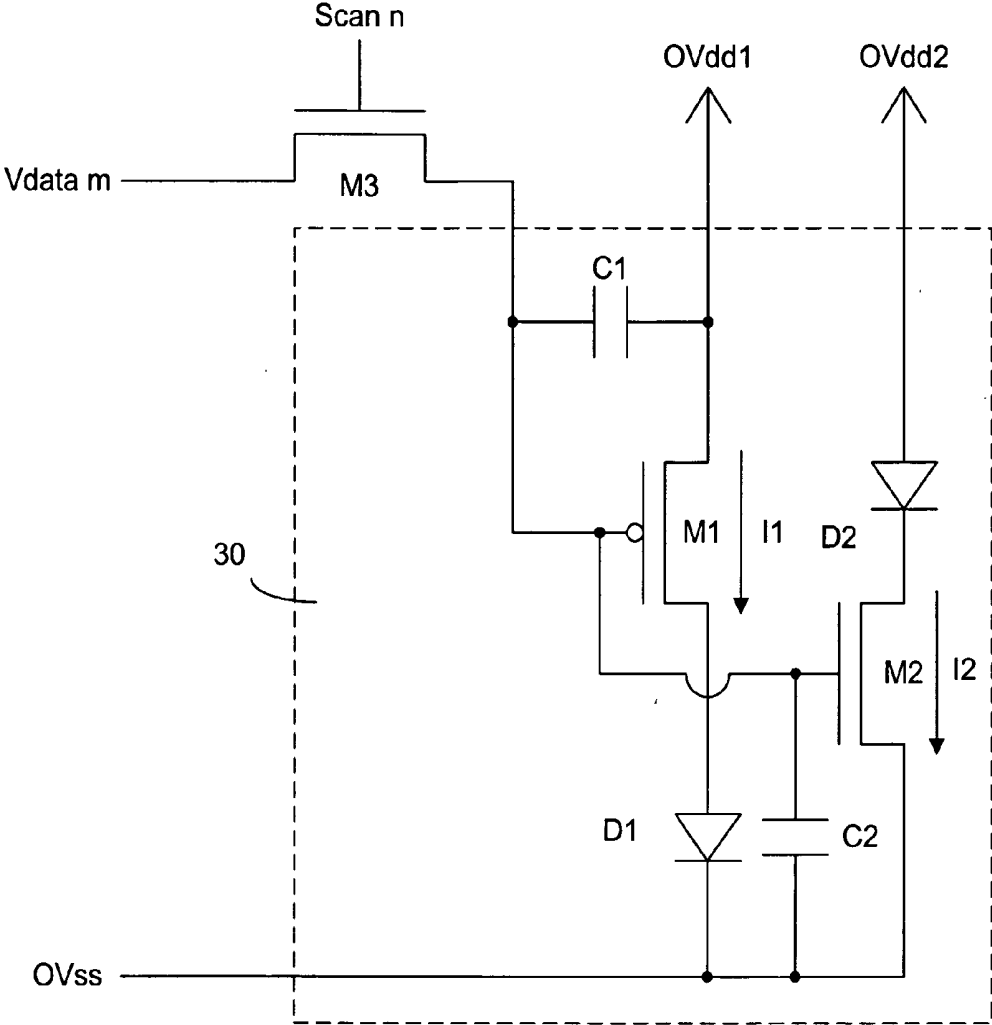


FIG. 7

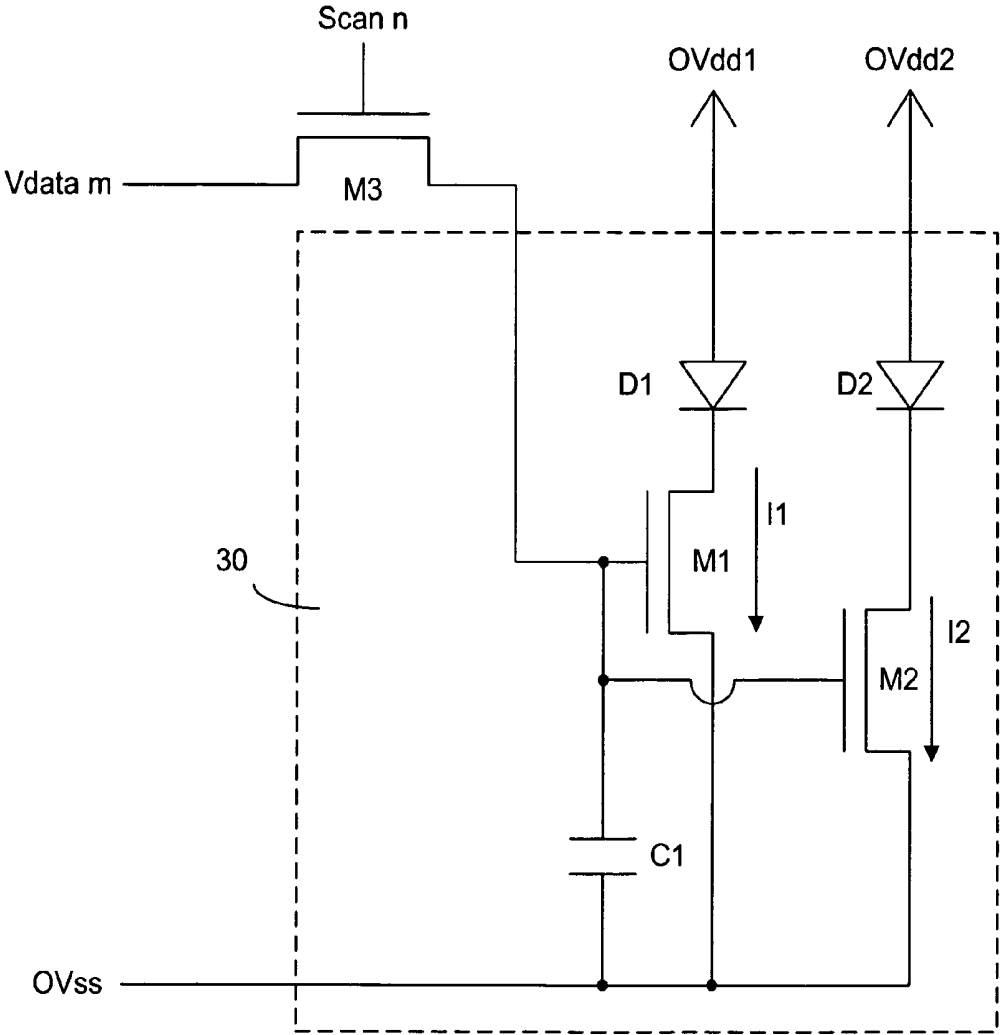


FIG. 8

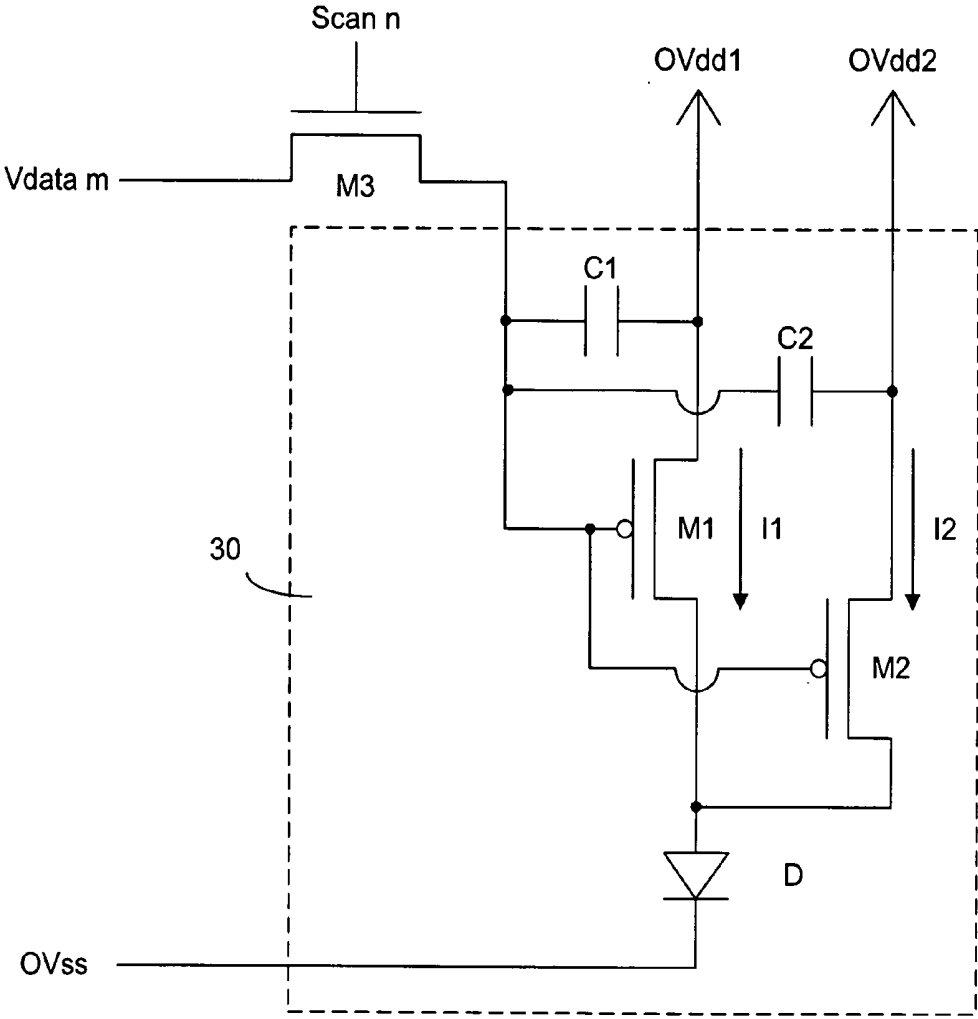


FIG. 9

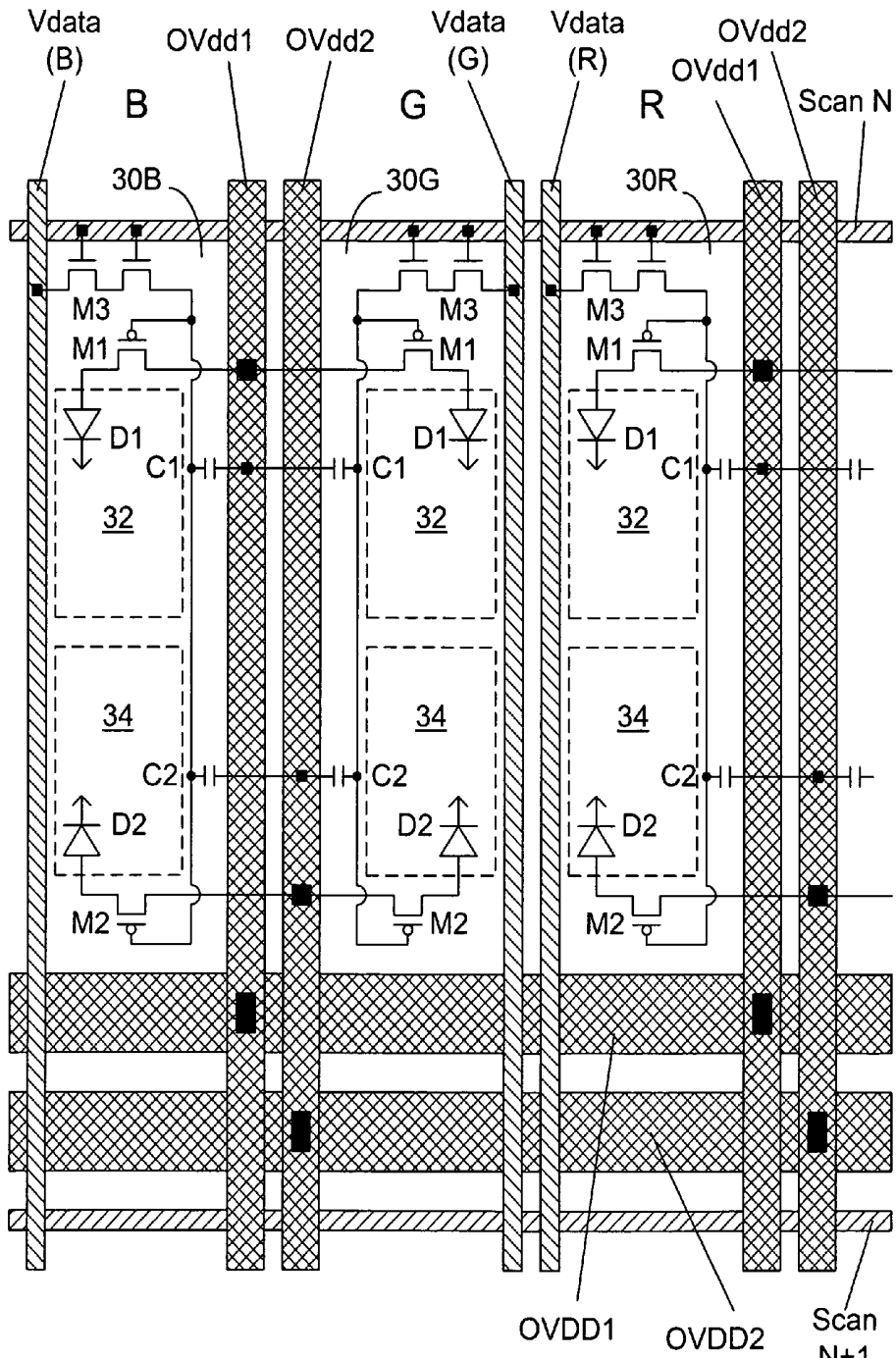


FIG. 10

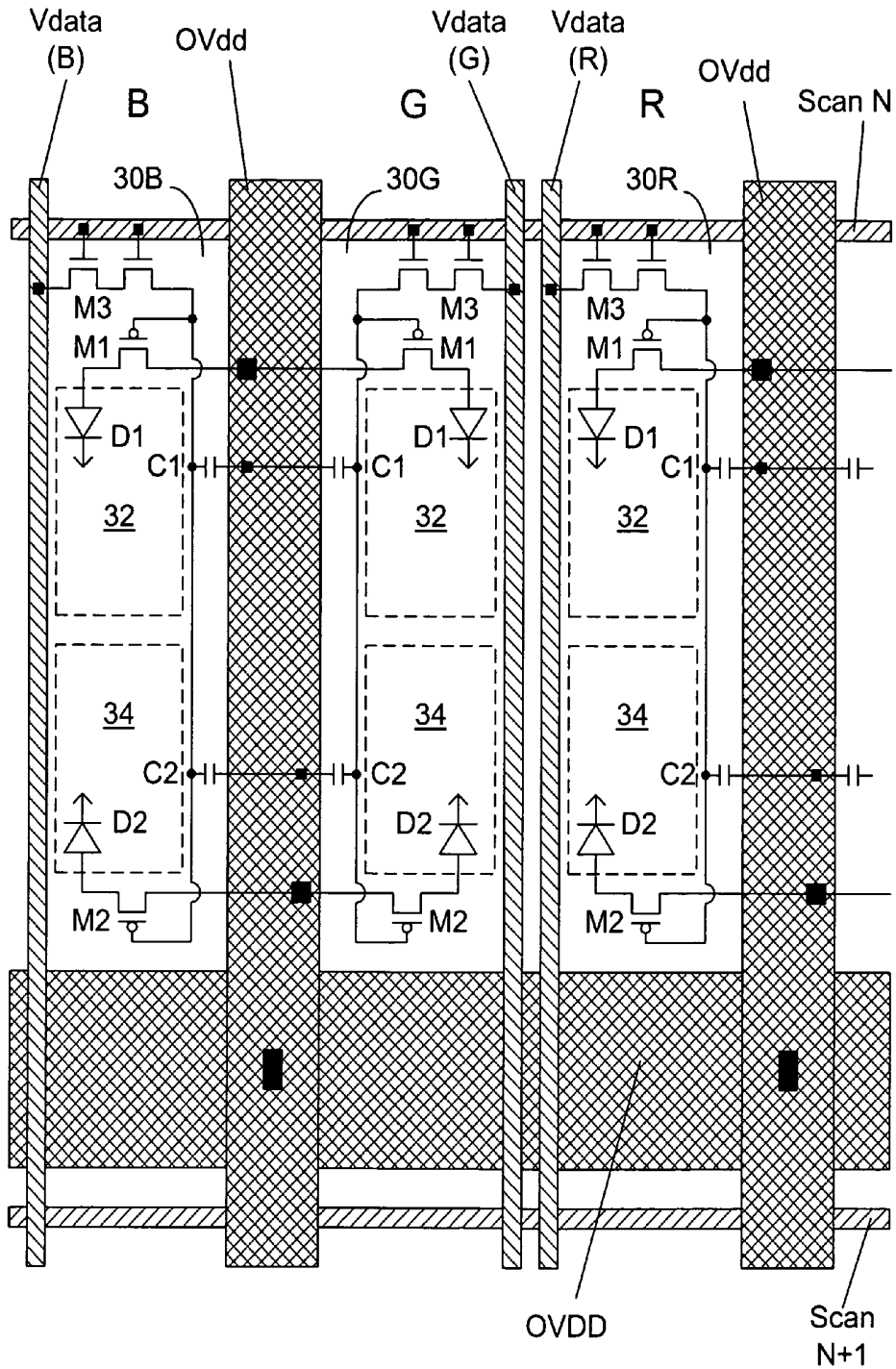


FIG. 11

PIXEL DRIVING CIRCUIT FOR LIGHT EMITTING DISPLAY PANEL

FIELD OF THE INVENTION

[0001] The present invention relates generally to a display panel having a plurality of pixels made of light-emitting diodes and, more particularly, to a circuit for driving the pixels.

BACKGROUND OF THE INVENTION

[0002] Light-emitting devices, such as organic light-emitting diodes (OLEDs), have been used in an active-matrix OLED (AMOLED) display. An active-matrix OLED (AMOLED) display panel consists of a two dimensional array of OLED pixels deposited or integrated onto a thin-film transistor (TFT) array. A typical OLED display panel is shown in FIG. 1. As shown, the display panel 1 has a plurality of pixels 10 arranged in rows and columns in a display area 100 driven by a data driver 200 and a gate driver 300. The data driver 200 is used to provide signals indicative of data on a data line to each of the columns and a gate driver 300 is used to provide a gate line signal to each of the rows. In a color OLED display panel, an image is generally presented in three colors: red (R), green (G) and blue (B). Each of the pixels 10 is typically divided into three color sub-pixels: red sub-pixel 20R, green sub-pixel 20G and blue sub-pixel 20B, as shown in FIG. 2. A data line 221 is used to provide the data signal to the R sub-pixel in a column, a data line 222 is used to provide the data signal to the G sub-pixel in the same pixel column, and a data line 223 is used to provide the data signal to the B sub-pixel in the same pixel column. The data line 224 is used to provide the data signal to the R sub-pixel in the next pixel column. A gate line 231 is used to provide the gate line signal to all sub-pixels in a row and a gate line 232 is used to provide the gate line signal to all sub-pixels in the next row.

SUMMARY OF THE INVENTION

[0003] The present invention provides a method and a pixel driving circuit in which two or more current paths through a plurality of switching elements are used to provide the necessary current to one or more OLEDs in a pixel. In particular, the control end of each switching element is connected to the control end of the other switching elements. According to the present invention, the gate terminal of one switching element is connected to the gate terminal of another switching element, whereas each switching element is connected to a different power source line. According to various embodiments of the present invention, the different source lines are separately connected to different power sources so that the current in each current path can be separately adjustable.

[0004] Thus, the first aspect of the present invention is a light-emitting display panel. The display panel comprises:

[0005] a plurality of pixels arranged in a plurality of rows and columns;

[0006] a plurality of data lines, each data line arranged to provide data signals to the pixels in a column;

[0007] a plurality of gate lines, each gate line arranged to provide scan signals to the pixels in a row, wherein each pixel comprises:

[0008] a control switching element having a first switching end arranged to receive data signals from a data line, a second switching end, and a control end arranged to receive a scan signal;

[0009] a first switching element comprising:

[0010] a first switching terminal arranged to receive electrical power for providing a first current in a first current path; a second switching terminal connected to a light-emitting component; and a control terminal connected to the second switching end of the control switching element; and

[0011] a second switching element comprising: a first switching terminal arranged to receive electrical power for providing a second current in a second current path; a second switching terminal connected to the light-emitting component; and a control terminal connected to the second switching end of the control switching element.

[0012] According to some embodiments, the light-emitting component comprises: a first light-emitting diode arranged to receive the first current from the first current path; and a second light-emitting diode arranged to receive the second current from the second current path.

[0013] According to various embodiments of the present invention, each pixel comprises:

[0014] a first capacitor connected between the first switching terminal and the control terminal of the first switching element, and a second capacitor connected between the switching terminal and the control terminal of the second switching element.

[0015] The first switching element is arranged to receive electrical power from a first power source and the second switching element is arranged to receive electrical power from a different second power source.

[0016] According to one embodiment of the present invention, each pixel comprises a pixel length, wherein the first switching element and the first light-emitting diode are located at a first end of the pixel length, and the second switching element and the second light-emitting diode are located at a second end of the pixel length. Each pixel is adjacent to a first power source line and a second power line along the pixel length, the first switching element arranged to receive electrical power from a first power source line and the second switching element arranged to receive electrical power from a second power source line.

[0017] The second aspect of the present invention is a method for use in a light-emitting display panel, the light-emitting display panel comprising:

[0018] a plurality of pixels arranged in a plurality of rows and columns;

[0019] a plurality of data lines, each data line arranged to provide data signals to the pixels in a column;

[0020] a plurality of gate lines, each gate line arranged to provide scan signals to the pixels in a row, wherein each pixel comprises a light-emitting component, wherein each of the pixels comprises a control switching element having a first switching end arranged to receive data signals from a data line, a second switching end, and a control end arranged to receive a scan signal, and each of the pixels comprises a light emitting component, said method comprising:

[0021] disposing a first current path in said each of the pixels for providing a first current to the light emitting component, and

[0022] disposing a different second current path in said each of the pixels for providing a second current to the light emitting component,

[0023] controlling the first current in the first current path through a first switching element, and

[0024] controlling the second current in the second current path through a second switching element, the first switching element comprising:

[0025] a first switching terminal arranged to receive electrical power for providing the first current in the first current path, a second switching terminal connected to the light-emitting component, and a control terminal connected to the second switching end of the control switching element; and

[0026] the second switching element comprising: a first switching terminal arranged to receive electrical power for providing the second current in the second current path, a second switching terminal connected to the light-emitting component, and a control terminal connected to the second switching end of the control switching element.

[0027] According to various embodiments of the present invention, the light-emitting component comprises: a first light-emitting diode arranged to receive the first current from the first current path; and a second light-emitting diode arranged to receive the second current from the second current path. Each pixel comprises a pixel length, wherein the first switching element and the first light-emitting diode are located at a first end of the pixel length, and the second switching element and the second light-emitting diode are located at a second end of the pixel length.

[0028] The present invention will become apparent upon reading the description taken in conjunction with FIGS. 3 to 11.

BRIEF DESCRIPTION OF THE INVENTION

[0029] FIG. 1 shows a typical OLED display panel.

[0030] FIG. 2 shows three color sub-pixels in a pixel in a typical OLED display panel.

[0031] FIG. 3 shows a portion of the display area having a plurality of pixels, according to various embodiments of the present invention.

[0032] FIG. 4 shows a pixel and its driving circuit, according to one embodiment of the present invention.

[0033] FIG. 5 shows a pixel and its driving circuit, according to another embodiment of the present invention.

[0034] FIG. 6 shows a pixel and its driving circuit, according to yet another embodiment of the present invention.

[0035] FIG. 7 shows a pixel and its driving circuit, according to still another embodiment of the present invention.

[0036] FIG. 8 shows a pixel and its driving circuit, according to a different embodiment of the present invention.

[0037] FIG. 9 shows a pixel and its driving circuit, according to yet another embodiment of the present invention.

[0038] FIG. 10 shows an exemplary layout of a pixel, according to the present invention.

[0039] FIG. 11 shows another layout of a pixel, according to the present invention.

DETAILED DESCRIPTION OF THE INVENTION

[0040] In a typical OLED display panel, a power source is used to provide a voltage to a plurality of pixels. A conductor is used to provide the voltage to each of the pixels as a drain voltage applied to a TFT which regulates the current through a connecting OLED. The conductor inherently has a resistance, causing a drop in the voltage in proportion to the current. The voltage drop can be substantial if the current is

high. As a result, the brightness of the display may vary noticeably among the pixels, affecting the viewing quality of an OLED display panel.

[0041] The present invention provides a pixel driving circuit and a method for improving the viewing quality of the OLED display panel by reducing the voltage drop in the pixels. According to various embodiments of the present invention, the drain voltage applied to the switching elements in the OLED pixels comprises two or more separate lines OVdd1, OVdd2. If the source voltage line in each pixel is short, it is sufficient to use only one source voltage line OVss. For example, if the OLED is fabricated on a substrate where one end of the diode is in direct contact with an electrically conducting plane, the voltage drop on the OVss side is negligible. However, it is also possible to use two or more OVss lines. As shown in FIG. 3, each pixel 22 has a pixel area 30 and each pixel area 30 has two separate conductors connected to OVdd1 and OVdd2. Gn, Gn+1, . . . are gate lines for providing gate line data and Dm, Dm+1, . . . are data lines for providing data signal.

[0042] In one embodiment of the present invention, a pixel area 30 comprises two OLEDs, D1 and D2, separately connected to two TFTs, M1 and M2 to form two separate current paths (shown with current I1 and current I2). The gate terminals of M1 and M2 are connected together such that, in effect, the current paths are connected in parallel. Both M1 and M2 are p-type TFTs arranged to be switched on or off simultaneously by a switching element M3, which can be a TFT. One end of the TFT M3 is connected to a data line to receive a signal Vdata m and the gate terminal of M3 is connected to a gate line to receive a scan signal n. Each of the current I1 and current I2 has a storage capacitor C1, C2 connected to the switching element M3.

[0043] With two or more OLEDs in each OLED pixel, it is possible to reduce the current I1 and current I2 to achieve the brightness from one OLED with a higher current. As a result, the voltage drop in each of the current paths is smaller than the voltage drop if only one current path is used to produce light. For example, the current used in only one current path to produce light at a certain brightness level is I, then it is possible to use $I1 < I$ and $I2 < I$ to achieve the same brightness level. If the brightness of an OLED is proportional to the current, then $I = I1 + I2$.

[0044] In another embodiment of the present invention, one of the current regulating TFTs is a p-type TFT and the other is an n-type TFT as shown in FIG. 5.

[0045] In yet another embodiment of the present invention, both M1 and M2 are n-type TFTs.

[0046] In the embodiments as shown in FIGS. 4 to 6, it is possible to put the anodes of both M1 and M2 in contact with an electrically conducting layer on a substrate where OVss is provided. As such, the voltage drop on the OVss side is substantially eliminated.

[0047] In a current path wherein an n-type TFT is used to regulate the current through the OLED, it is also possible to connect one switching end of the TFT to OVss, as shown in FIGS. 7 and 8. In this configuration, it would be advantageous to keep the connector between the source terminal of the TFT or TFTs to the OVss source very short so as to reduce the voltage drop on the OVss side.

[0048] It should be noted that, according to various embodiments of the present invention, the voltage drop on OVdd can be reduced by using two or more current paths to provide the current to an OLED on each of the current paths.

It is possible to achieve a similar voltage-drop reduction by passing the currents from two or more current paths to one OLED, as shown in FIG. 9.

[0049] In summary, the present invention provides a method and a pixel driving circuit in which two or more current paths, through a plurality of switching elements, are used to provide the necessary current to one or more OLEDs in a pixel. In particular, the control end of each switching element is connected to the control end of the other switching elements. For example, as shown in FIGS. 4 to 6, the gate terminal of TFT M1 is connected to the gate terminal of TFT M2. According to various embodiments of the present invention, each switching element has a separate power source OVdd so that the power sources can be separately adjustable. Furthermore, with separate power sources, it is possible to arrange OVdd1 and OVdd2 to be provided from different directions. For example, each of the pixels 30 as shown in FIG. 4 represents a color sub-pixel R, B or G. The color sub-pixels can be arranged side-by-side, with two power-source lines OVdd1, OVdd2 located between two adjacent color sub-pixels such as B and G. In each of the sub-pixels R, B and G, the TFT M1 is located at one end of the sub-pixel and the other TFT M2 is located at the other end. As shown in FIG. 10, the sub-pixel 30 has a width separated by a data line (Vdata) and one of power-source lines OVdd1 and OVdd2, and a length separated by a scan line and a source-supply line OVDD. Along the length the sub-pixel has a first end a second end. The first end has a first OLED area 32 and the second end has a second OLED area 34. At the first end, TFT M1 is used to provide the current path to OLED D1 in the first OLED area 32. At the second end, TFT M2 is used to provide the current path to OLED D2 in the second OLED area 34. As such, the power-source line OVdd1 provides a source voltage to TFT M1 from the first end and the power-source line OVdd2 provides a source voltage to TFT M2 from the second end. Since each TFT is connected to a separate power-source line at a short distance, the voltage drop of OVdd1 and OVdd2 can be reduced.

[0050] In other embodiments, the power sources that provide electrical power to M1 and M2 are connected to the same power source OVDD, as shown in FIG. 11. Thus, the power source lines OVdd1 and OVdd2 as shown in FIG. 10 can be combined into a power source line OVdd.

[0051] Thus, although the present invention has been described with respect to one or more embodiments thereof, it will be understood by those skilled in the art that the foregoing and various other changes, omissions and deviations in the form and detail thereof may be made without departing from the scope of this invention.

What is claimed is:

1. A light-emitting display panel, comprising:

a plurality of pixels arranged in a plurality of rows and columns;

a plurality of data lines, each data line arranged to provide data signals to the pixels in a column;

a plurality of gate lines, each gate line arranged to provide scan signals to the pixels in a row, wherein each pixel comprises:

a control switching element having a first switching end arranged to receive data signals from a data line, a second switching end, and a control end arranged to receive a scan signal;

a first switching element comprising:

a first switching terminal arranged to receive electrical power for providing a first current in a first current path;

a second switching terminal connected to a light-emitting component; and

a control terminal connected to the second switching end of the control switching element; and

a second switching element comprising:

a first switching terminal arranged to receive electrical power for providing a second current in a second current path;

a second switching terminal connected to the light-emitting component; and

a control terminal connected to the second switching end of the control switching element.

2. The display panel of claim 1, wherein the light-emitting component comprises:

a first light-emitting diode arranged to receive the first current from the first current path; and

a second light-emitting diode arranged to receive the second current from the second current path.

3. The display panel of claim 1, wherein each of the first switching element and the second switching element comprises a p-type transistor.

4. The display panel of claim 1, wherein each of the first switching element and the second switching element comprises an n-type transistor.

5. The display panel of claim 1, wherein the first switching element comprises a p-type transistor and the second switching element comprises an n-type transistor.

6. The display panel of claim 1, wherein each pixel further comprises:

a capacitor connected between the first switching terminal and the control terminal of the first switching element.

7. The display panel of claim 1, wherein the first switching element is arranged to receive electrical power from a first power source and the second switching element is arranged to receive electrical power from a different second power source.

8. The display panel of claim 2, wherein each pixel comprises a pixel length, wherein the first switching element and the first light-emitting diode are located at a first end of the pixel length, and the second switching element and the second light-emitting diode are located at a second end of the pixel length.

9. The display panel of claim 8, wherein each pixel is adjacent to a first power source line and a second power source line along the pixel length, the first switching element arranged to receive electrical power from the first power source line and the second switching element arranged to receive electrical power from the second power source line.

10. The display panel of claim 1, wherein each pixel comprises a color sub-pixel.

11. A method for use in a light-emitting display panel, the light-emitting display panel comprising:

a plurality of pixels arranged in a plurality of rows and columns;

a plurality of data lines, each data line arranged to provide data signals to the pixels in a column;

a plurality of gate lines, each gate line arranged to provide scan signals to the pixels in a row, wherein each pixel comprises a light-emitting component, wherein each of the pixels comprises a control switching element having

a first switching end arranged to receive data signals from a data line, a second switching end, and a control end arranged to receive a scan signal, and each of the pixels comprises a light emitting component, said method comprising:

disposing a first current path in said each of the pixels for providing a first current to the light emitting component, and

disposing a different second current path in said each of the pixels for providing a second current to the light emitting component,

controlling the first current in the first current path through a first switching element, and

controlling the second current in the second current path through a second switching element, the first switching element comprising:

a first switching terminal arranged to receive electrical power for providing the first current in the first current path;

a second switching terminal connected to the light-emitting component; and

a control terminal connected to the second switching end of the control switching element; and

the second switching element comprising:

a first switching terminal arranged to receive electrical power for providing the second current in the second current path;

a second switching terminal connected to the light-emitting component; and

a control terminal connected to the second switching end of the control switching element.

12. The method of claim **11**, wherein the light-emitting component comprises:

a first light-emitting diode arranged to receive the first current from the first current path; and

a second light-emitting diode arranged to receive the second current from the second current path.

13. The method of claim **12**, wherein each pixel comprises a pixel length, wherein the first switching element and the first light-emitting diode are located at a first end of the pixel length, and the second switching element and the second light-emitting diode are located at a second end of the pixel length.

14. The method of claim **13**, further comprising:

arranging a first power source line and a second power line along the pixel length such that each pixel is adjacent to both the first power source line and the second power source line;

arranging the first switching element for receiving electrical power from the first power source line and the second switching element for receiving electrical power from the second power source line.

* * * * *

专利名称(译)	用于发光显示面板的像素驱动电路		
公开(公告)号	US20110050550A1	公开(公告)日	2011-03-03
申请号	US12/584221	申请日	2009-09-01
[标]申请(专利权)人(译)	友达光电股份有限公司		
申请(专利权)人(译)	友达光电股份有限公司		
当前申请(专利权)人(译)	友达光电股份有限公司		
[标]发明人	TSAI TSUNG TING CHANG LEE HSUN		
发明人	TSAI, TSUNG-TING CHANG, LEE-HSUN		
IPC分类号	G09G3/30		
CPC分类号	G09G3/3233 G09G2300/0426 G09G2300/0439 G09G2300/0465 H01L27/326 G09G2300/0852 G09G2320/0223 G09G2320/0233 G09G2330/02 G09G2300/0842		
其他公开文献	US8692742		
外部链接	Espacenet USPTO		

摘要(译)

显示面板具有以行和列布置的多个OLED像素。像素驱动电路具有通过多个开关元件的两个或更多个电流路径，用于向像素中的OLED提供必要的电流。每个开关元件的控制端连接到其他开关元件的控制端，但每个开关元件具有可单独调节的单独电源。在一些实施例中，在像素或子像素中，一个开关元件位于一端，一个开关元件位于像素长度的另一端，并且每个像素与第一电源线 and 第二电源相邻沿像素长度的源极线用于分别向两个开关元件提供电功率。

